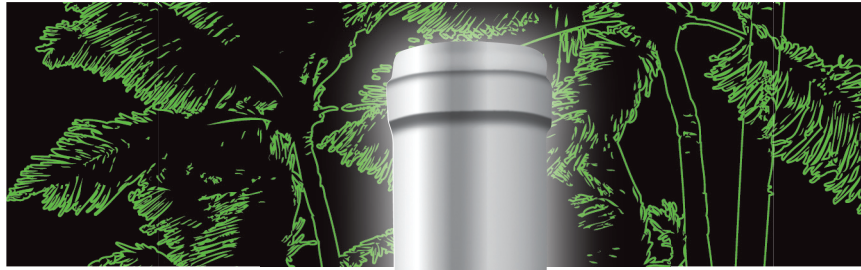


**LE
18**

**SYMPHONY
GEWÜRZTRAMINER**
CALIFORNIA



AVAILABLE MARCH 2019

SIERRA FOOTHILLS, CALIFORNIA

The Sierra Foothills were the center of the California Gold Rush in the mid-1800s. European immigrants flocked here seeking their fortunes and planted the area's first vineyards as they settled into life in the Wild West. Rustic and remote compared to the state's other regions – Gold Rush ghost towns still dot the countryside – growers take full advantage of the varied terrain of the foothills, utilizing the slopes to maximize sun exposure. The shallow soil is mainly decomposed granite, shale or volcanic matter; not particularly fertile ground, nor does it retain much moisture in a region where water can be scarce. These harsh-sounding conditions are actually good news for grapes as the vines yield less fruit, resulting in more concentrated flavours.

SYMPHONY GEWÜRZTRAMINER

Symphony is one of California's hidden gems bringing peach, apple and tropical fruit flavours, it is a natural and perfect complement to Gewürztraminer's characteristic lychee notes. An aromatic blend with floral and juicy peach aromas, this off-dry wine deliciously combines lush tropical and stone fruit flavours. Crisp and bright with expressive fruit and subtle sweetness, this wine really sings when chilled. A beauty to sip on its own, or a perfect companion to spicy Asian dishes, zesty barbecue or baked ham.

SWEETNESS: OFF-DRY

OAK: NONE

BODY: LIGHT-MEDIUM

ALCOHOL: 12%*



*Alcohol level based on following Winexpert winemaking instructions.

winexpert™

LOVE YOUR WINE. GUARANTEED.™

www.winexpert.com